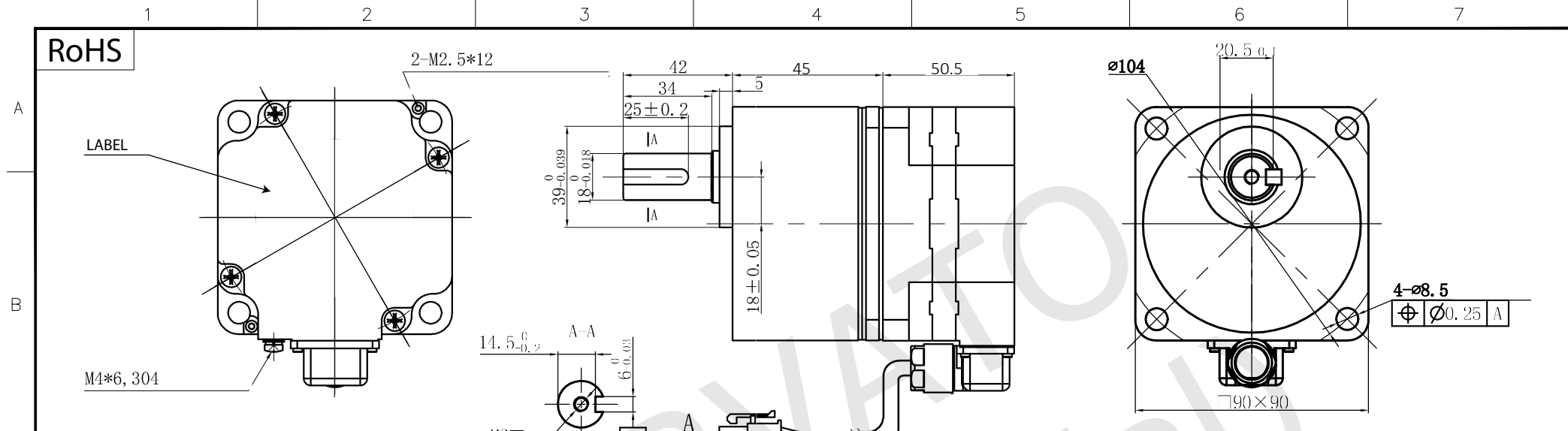


RoHS



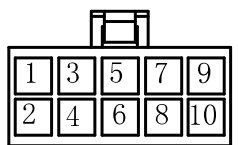
GEARBOX SPECIFICATIONS

REDUCTION RATIO	1:5
EFFICIENCY	81%
RATED TORQUE	1.55~32 Nm
NOISE	60dB(A)

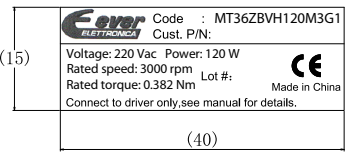
MOTOR SPECIFICATIONS

RATED VOLTAGE	220 Vac
POLE PAIRS	5
PHASES	3
RATED CURRENT	1.2 A
PEAK CURRENT	--- A
RATED POWER	120 W
RATED TORQUE	0.382 Nm
PEAK TORQUE	--- Nm
RATED SPEED	3000 rpm ±10%
NO LOAD SPEED	4000 rpm ±10%
INSULATION CLASS	Class B, 130°C
IP CODE	IP54

WIRING DIAGRAM



LABEL



YYWWXXXX (25 x 8)

Stator barcode label

MT36ZBVH120M3G1
DC BRUSHLESS MOTOR SPECIFICATION



www.everelettronica.it

UNIT: mm
UNLESS OTHERWISE SPECIFIED TOLERANCES
DIMENSIONS : ±0.3 mm DEGREES : ±5%
ORTHOGRAPHIC PROJECTION

DESIGN	Stm02538-00
CHECK	
APPROVED	
DATE	07 / 09 / 2022

DRAWING NOT TO SCALE

REV 00 - First release.

REV	